

SAFETYLINE JALOUSIE



THE FUTURE LOUVRE

CAPABILITY STATEMENT



156

boem



CONTENTS

Company Profile 04	Project Showcase 16
Corporate Social Responsibility 06	Case Studies 20
Key Capabilities 08	Awards 40
Our Offices 12	Testimonials 42
Corporate Structure 13	
Quality Management 14	



Economically viable, energy efficient solutions for indoor air environments



Company Details

Company Name	SMR Design Pty Ltd
Trading Name	Safetyline Jalousie
Australian Business Number	ABN 23 123 507 853
Date of Incorporation	1/10/2009
Registered Business Address	3/11-17 Wilmette Place Mona Vale NSW 2103
Telephone	1300 863 350
Email	sales@safetylinejalousie.com.au
Website	safetylinejalousie.com.au
Workers Compensation	Policy No. 105181001
Amount of Cover	\$1,499,032.97
Public & Products Liability	Logan Insurance Policy No. PLI110110231
Bankers	National Australia Bank

COMPANY PROFILE

Values

Safetyline Jalousie louvre windows are well known for overcoming the design, safety and security limitations of conventional louvre windows. With some of the highest performance ratings of a louvre window system, our product is proven to increase airtightness while maximising natural airflow in buildings.

As a proud Australian family-owned and operated business, SMR Designs Pty Ltd is authorised to manufacture and distribute Safetyline Jalousie louvre windows in Australia and the South Pacific.

Social Impact	Better outcomes for the health and wellbeing of building occupants.
Environment Preservation	Supporting the United Nations global sustainable development goals.
Sustainability	Being market leaders and delivering building products for ongoing energy efficiency.
Stronger Economy	Supporting local job growth and Australian manufacturing.

Accreditation & Recognition

Australian Glass & Window Association	Compliance (Gold) October 2020
Australian Glass & Window Association	Compliance (Gold) October 2020
Miramar	Certificate of Currency November 2019
iCare Workers Insurance	Certificate of Currency August 2020.

History

Having worked their way up through the ranks of their father's successful manufacturing business Vergola NSW, The founders, Leigh and Nathan Rust established the company in 2009. Throughout their careers, the Co-Founders and Directors have spent two decades between the Australian home improvement and commercial premises building market and manufacturing.

Over the past decade, our operation has grown from a small 60m² factory with five staff to a 2500m² facility with 50+ staff with headquarters in Sydney and offices in Brisbane and Melbourne, and an offshore office and manufacturing base in Malaysia.

Performance

SMR Designs and Safetyline Jalousie are backed by Technal, a division of the European giant Norsk Hydro. Hydro is a world leader in the aluminium building systems sector with activities in more than 40 countries, on all continents. Along with Technal's extensive range of windows, doors, facades, balustrades and partitions, Safetyline Jalousie louvre windows have a long and stable history of superior performance in commercial, public and residential buildings across the globe.

Technal and Hydro offer a robust supply chain, scientific knowledge and specialised engineering teams that are continually working on new applications to improve their product and develop aluminium alloys with a low carbon footprint.

Additionally, Leigh and Nathan and SMR Designs are also formally recognised for their innovations and future proof solutions designed specifically for Australian conditions.

Performance has always been Safetyline Jalousie's core strength and value proposition. The product doesn't just meet industry standards and expectations; it exceeds them, and after a decade in business, the company is proud to expand on this value proposition with core values that deliver more than performance.



CORPORATE SOCIAL RESPONSIBILITY

Social Impact

We believe we must all play out part in ensuring the social welfare of others. Its why 'Social impact' is one of the underpinning pillars of our business.

Beyond the innovative work that we do developing performance louvre windows to improve social outcomes, we also get behind a number of causes and community fundraisers.



CEO Dare to Cure



Tiny Homes Project



Vinnies CEO Sleepout



Playing our Part

During the devastating Australian Wildfires, we adopted 10 Koalas from the Koala Hospital in Port Macquarie. Safetyline Jalousie was also proud to have recently been involved in a variety of different fundraising initiatives which included;

The CEO SleepOut where the Safetyline Jalousie team raised \$5,625 to assist those experiencing homelessness with vital access to food and accommodation.

We were also proud to be selected as the optimal option for increasing cross ventilation throughout the first-ever Tiny Homes Project's compact living environments without compromising security.

Additionally, Safetyline Jalousie supports the Alannah & Madeline Foundation in their mission to keep children safe from violence and bullying and regularly gets behind efforts to raise funds for Motor Neurone Disease Australia.

Most recently though, Leigh and Nathan participated in the CEO Dare to Cure challenge to help raise much needed funds for Childhood Cancer Research.

WHY WORK WITH US?



**Leigh Rust,
Founder & Director
Safetyline Jalousie**

Our purpose is to provide economically viable, energy efficient solutions for indoor air environments that improve health, wellbeing and productivity.



Key Capabilities

Safetyline Jalousie is an established company that is well equipped to manufacture and deliver a quality finished product within project timelines.

In our 10 years of business we have supplied over 250,000 louvre windows to 2,000 different projects of various size and scope. The total value of these projects is estimated at over \$10 Billion.

Our portfolio boasts a diverse range of projects where we have worked alongside various stakeholders including public infrastructure, global commercial developers and private owner operators.

Safetyline Jalousie have demonstrated experience in commercial, high rise multi-residential, health, aged care, education, industrial, government and modular building projects.

Established & Respected

- Established for 10 years with proven year on year growth.
- Respected Australian owned and operated family business.
- Headquartered in Sydney, Australia. Covid safe and open for business.
- No delays, business as usual during covid-19 due to governments proactive measures to control pandemic in Australia.
- Recognised internationally for innovation in product design to the construction sector.
- Support economic stimulus by meeting the requirements of government policies.

Collaborative & Knowledgeable

- We work with architects to solve design problems.
- We create local jobs and support an industry of 1,500 window fabricators with 15,000 employees.
- We keep pace with the construction sector with our generous supply of a locally made product.
- We provide better quality products for better outcomes and a better-built environment.
- Our product improves natural ventilation and enhances indoor air quality while reducing energy costs up to 5%.
- It delivers immediate social, environmental and economic benefits with long-term benefits for infrastructure investment.

Project Highlights

- QLD State School Year 7 rollout
- Modular classrooms program for Queensland Department of Education
- QLD Government cyclone shelters
- Gold Coast Sports & Leisure Centre for the XXI Commonwealth Games
- Indigenous Housing Projects for Northern Territory government
- NSW's first vertical school – Arthur Philip High School
- Roads & Maritime NSW Noise Abatement Treatment Program
- No1 Bligh Street – Sydney's first 6 Star GreenStar Commercial tower
- Redevelopment of Bankwest Stadium
- Papua New Guinea Infrastructure projects as part of the Australian government funded Pacific leadership and Government precinct.



Some of our Clients

School Infrastructure NSW, RMS NSW, Tafe Infrastructure NSW, NSW Office of Sport and Recreation, QLD Department of Education & Training, Victorian School Building Authority.

Private Education providers including Catholic Education in NSW, QLD and VIC, The Anglican Schools Corporation and the Association of Independent Schools.

Social Infrastructure providers including many Community Housing Providers and many Aged Care providers including Opal, Bupa, Estia, Regis, and Ozcare.

Tier 1 and Tier 2 Developers and Builders including Meriton, Mirvac, Lend Lease, Multiplex, Dexus, JLL, Watpac, Sekisui House, Frasers Property, Adco and Hansen Yuncken.

As well as hundreds of private architectural practices across Australia.



OUR OFFICES

Australia

Sydney (head office)

Location
3/11-17 Wilmette Place, Mona Vale
NSW 2103

Phone
1300 863 350

Business Manager (NSW & ACT)
Adam Racomelara

Email
adamr@safetylinejalousie.com.au

Mobile
0410 146 158

Brisbane

Business Manager (QLD, NT, WA)
Romile John

Email
rjohn@safetylinejalousie.com.au

Mobile
0400 760 733

Melbourne

Business Manager (VIC, SA, TAS)
Ali Asmar

Email
ali@safetylinejalousie.com.au

Mobile
0406 871 938

Malaysia

Kuala Lumpur

Location
59200, Lingkaran Syed Putra,
Mid Valley City, 58000 Kuala Lumpur,
Federal Territory of Kuala Lumpur,
Malaysia

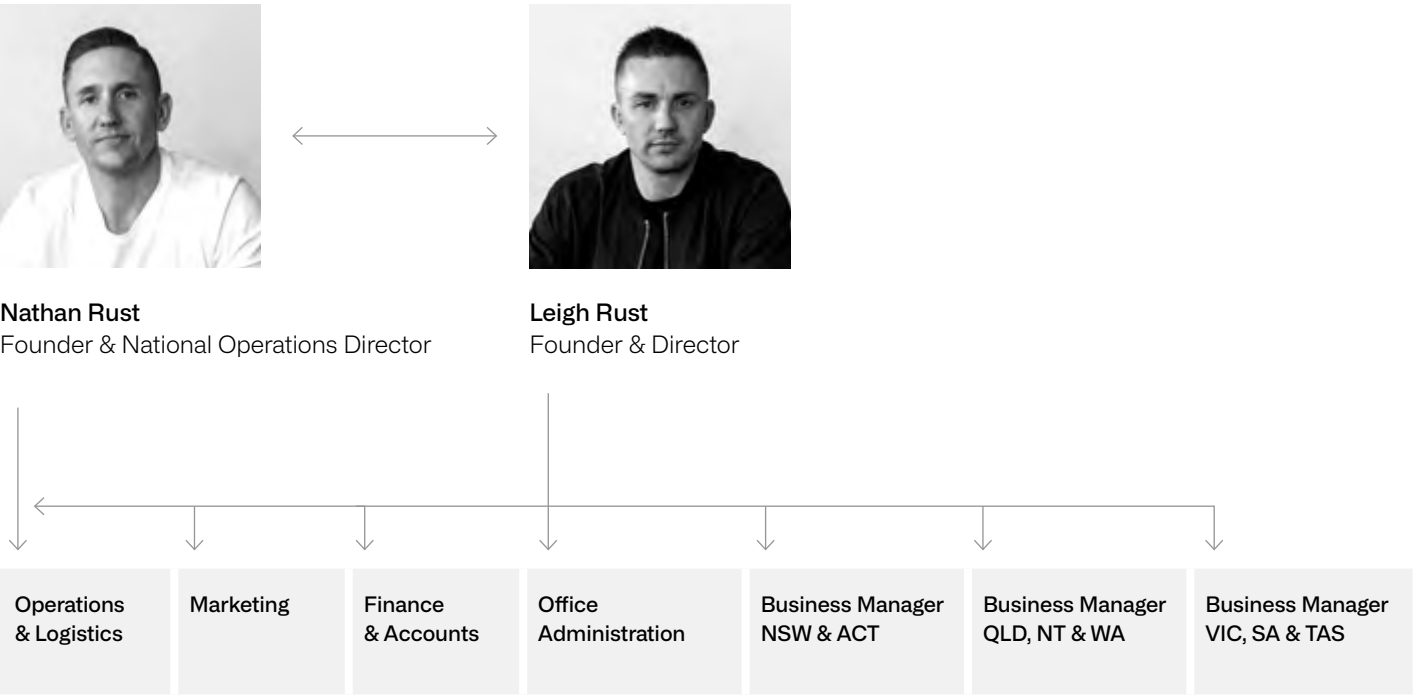
Supply Chain

Safetyline Jalousie utilises various different freight forwarders to deliver to all major Australian cities, regional areas and overseas.





CORPORATE STRUCTURE



A dynamic team of skilled and innovative people, pushing the boundaries.

QUALITY MANAGEMENT

Our Commitment

Safetyline Jalousie has a comprehensive quality control programme which focuses on continuous improvement and the pursuit of the highest level of customer service from early design stage all the way through to after sales service.

We are committed to meeting the needs and expectations of our clients by providing quality products which are defect free, competitively priced, constructed and delivered on time while complying with statutory and regulatory obligations.



Quality Control Program

Our quality control programme includes:

- Employing qualified, skilled and experienced staff.
- Educating and training to improve the skills of our staff.
- Monitoring and evaluating the quality performance of consultants and suppliers.
- QA checks throughout the various stages of the manufacturing process.
- Constant communication between clients, employees and suppliers to achieve continual improvement.
- Project specific trap hazard risk assessments.
- Energy / Data modelling to achieve the best possible project outcomes.
- After sales maintenance and servicing with strategic alliances in all states of Australia.

Safetyline Jalousie louvre windows meet the requirements of Australian Standards AS2047-2014 (Windows and Glazed Doors in Buildings), AS1288-2006 (Glass in Buildings – Selection and Installation) and AS4055-2012 (Wind Loads for Housing).

All windows are labelled with their identification, window rating and water penetration resistance. Product compliance and key performance ratings have been confirmed from actual test data from accredited test laboratories.



PROJECT SHOWCASE

Aged & Health Care

Commercial

Education

Multi-Residential

Sports & Leisure

Government

Export



SAFETYLINE JALOUSIE



Aged & Health Care

- The Royce, Penrith, NSW (264 windows)
- Ozcare, Hervey Bay, QLD (96 windows)
- John Wesley Gardens, QLD (71 windows)
- CC Cares Facility, ACT (45 windows)
- Alfred Hospital, VIC (24 windows)



Commercial

- Westfield Pacific Fair, QLD (101 windows)
- Maroochy Arts & Ecology Centre, QLD (38 windows)
- 1 Bligh Street, Sydney NSW (69 windows)
- Museum and Art Gallery, Darwin NT (28 windows)
- The Bellview Hotel Cairns, QLD (38 windows)



Education

- Oran Park High School, NSW (776 windows)
- Arthur Phillip High School, NSW (580 windows)
- Calliope State School, QLD (458 windows)
- Canberra Grammar School, ACT (62 windows)
- William Ruthven College, VIC (102 windows)



Multi-Residential

- Natura, Macquarie Park NSW (1080 windows)
- New Life, Ultimo NSW (367 windows)
- Meriton Kiara, Mascot NSW (560 windows)
- York & George, Sydney NSW (720 windows)
- Serrata Apartments, VIC (39 windows)



Sports & Leisure

- LaTrobe University Sports Park Complex, VIC (373 windows)
- QLD State Netball Centre, QLD (96 windows)
- Gold Coast Sports & Leisure Centre, QLD (55 windows)
- Annette Kellerman Aquatic Centre, NSW (99 windows)
- Caroline Springs Leisure Centre, VIC (49 windows)



Government

- Kapyong Building, Larrakeyah Barracks, NT (156 windows)
- Chinook Hangar, RAAF Base Townsville, QLD (75 windows)
- Borallon Prison, QLD (88 windows)
- DFAT Residential Refurb, PNG (59)
- Lavrack Barracks, QLD (112 windows)



Export

- LAE School of Nursing, PNG (169 windows)
- University of PNG Lecture Theatre, PNG (12 windows)
- Architect Chris Cole's Pak Shak, Fiji (23 windows)
- Shed 19 Prices Wharf Auckland, NZ (18 windows)
- Beeson Residence, Vanuatu (41 louvres)

CASE STUDIES

Melrose Retirement Village

Kiara North

Canberra Region Cancer Centre

Start Training Centre

1 Bligh Street

Carrara Sports and Leisure Centre

Airtrain Citylink

Meriton Luna Apartments

Westfield Pacific Fair

Bohem Apartments

University of Papua New Guinea

Queensland Government Cyclone Shelters

Start Training Centre

Johanna O'Dea Court

Eagleby State School

La Trobe Sports Stadium



Melrose Retirement Village

Pendle Hill, NSW



Safetyline Jalousie louvre windows are increasingly being specified in aged care settings across Australia.

For this aged care project located in Pendle Hill, NSW the architects ThomsonAdsett specified Safetyline Jalousie louvre windows primarily for their stylish design features which complemented the overall aesthetics of the building.

They especially liked the look of the individually framed louvre blades with simple, yet defined edges. The Safetyline Jalousie louvre window system worked together with the other window system as a seamless window set.

They were cognisant of the need of the elderly residents, many of whom are not used to or do not like air conditioning, to be able to easily open and close the windows. Safetyline Jalousie’s simple single handed manual operating lever makes it easy for residents to manage and control the flow of fresh air into their living environment.

The louvre windows have been positioned at both the bottom and the top of the floor to ceiling windows allowing low pressure at the top to be flushed out and high pressure at the bottom – creating a clever venturi effect.

PROJECT SPECIFICATIONS

Quantity Supplied	34
Height	1009mm
Width	900mm
Colour/Finish	Bronze anodised
Louvres	Clear anodised aluminium
Architect	ThomsonAdsett



Canberra Region Cancer Centre Canberra, ACT

The Canberra Region Cancer Centre is an outpatient medical facility for patients receiving their medications intravenously. The facility delivers a highly controlled environment, ensuring that there is no cross-contamination of air entering or escaping the building.

The superior seals featured around each Safetyline Jalousie louvre blade provide a perfect solution for this controlled environment. At the same time the ability for the automated louvre windows to open when triggered by the building management system (BMS) provides a clever technical solution for their fire and emergency system.

Safetyline Jalousie louvre windows have been installed in windows located adjacent to the fire escape stairways and are used to provide an “air relief” grill. In the case of an emergency the air relief louvre windows will open up automatically, decreasing the air pressure within the building. The lower air pressure in the building stops smoke from entering the escape stairs where higher air pressure is maintained.

Safetyline Jalousie’s louvre windows delivered a solution that not only maintained the quality of the air conditioning system but also enhanced the aesthetics of the building. The Safetyline Jalousie louvre window system is a perfect match for the recessed window design of the building and creates a frameless external appearance.



PROJECT SPECIFICATIONS

Quantity Supplied	14
Height	2761mm (20 blades)
Width	500mm (1100mm)
Colour/Finish	Clear anodised
Louvres	6mm Viridian EVantage SuperGreen toughened glass
Operation	Motorised – connected to and controlled by the BMS
Architect	HBO+EMTB Architects

1 Bligh Street Sydney, NSW



1 Bligh Street, Sydney is the next generation in high performing sustainable office spaces which combines leading edge design, technology and sustainability in a premier location in the Sydney financial hub.

Designed to achieve a 6-star Green Star Office Design v2 Certified rating, this flagship tower of 42,000sqm over 28 levels of office space has a full height naturally ventilated atrium and allows maximum natural light onto the floor plate.

Safetyline Jalousie louvre windows were installed below the atrium roof to provide natural ventilation – the louvre windows automatically open or close according to the temperature outside the building.



Safetyline Jalousie’s louvre window robust design and weatherproof seals made the product the ideal choice for this cutting-edge project.

PROJECT SPECIFICATIONS

Quantity Supplied	69
Height	334mm & 604mm
Width	800mm
Colour/Finish	Powder coated RAL 9007
Louvres	6mm low iron clear glass
Operation	Motorised
Additional Info	Motors are connected to and controlled by the building management system



Airtrain Citylink Brisbane, Qld



Airtrain Citylink is a privately owned and operated railway located at Brisbane Airport providing transport between Brisbane Airport, Brisbane City and on to the Gold Coast.

When designing the Airtrain Citylink Station building, W.I.M. architects were careful to specify windows that delivered an acoustic performance strong enough to cope with the high level of aircraft noise. Safetyline Jalousie louvre windows were chosen because they have an acoustic performance delivering sound reduction of up 33dB.

Other considerations included the creation of a comfortable workplace for Airtrain Citylink staff that was safe and secure. The strength, durability and impenetrable security of Safetyline Jalousie louvre windows delivered optimum security with their internal stainless steel rods.

The windows in this project were 1400mm wide – the widest available louvre window on the market. This was of great appeal to the architect.

The choice of Safetyline Jalousie louvre windows also delivered important ventilation and natural light into the building.

PROJECT SPECIFICATIONS

Quantity Supplied	7
Height	2400mm
Width	1400mm
Colour/Finish	Clear anodised frame finish
Louvres	6mm clear toughened glass
Architect	WIM Architects

Westfield Pacific Fair Gold Coast, QLD



- The brief for louvre windows at Westfield Pacific Fair included several key elements:
- The ability to be fixed open at a particular angle to allow consistent 30% airflow and provide ventilation in the case of fire
 - The flexibility to be custom built to meet the widths specified by pre-fabricated structural steel
 - To be corrosion proof, due to the building's location within 1km of the beach

In assessing the options, Westfield chose Safetyline Jalousie louvre windows as the best solution to meet their needs. Safetyline Jalousie's aluminium louvre windows are also corrosion proof windows, with tailor-made tamper proof levers that can be fixed open at the required angle.

Louvre spans up to 1400mm, and the ability to manufacture to specified widths, meant that Safetyline Jalousie louvre windows fit the bill in terms of flexibility in widths required. Widths ranged from 1000mm to 1200mm depending on what was required between the structural steel posts.

Finally, concerns about corrosion are eliminated as Safetyline Jalousie louvre windows are made out of Aluminium, Zamac and stainless steel construction, and use high performance coatings on the aluminium frame.

PROJECT SPECIFICATIONS

Quantity Supplied	103
Height	1279mm (9 blades)
Width	1000mm – 1200mm
Colour/Finish	Powder coated - Zeus Black Matt
Louvres	6mm Enezytech grey toughened glass
Operation	Motorised
Architect	Builder Westfield Design & Construction



University of Papua New Guinea Port Moresby, PNG



Superior wind and water performance, inbuilt security and quick and easy installation are the stand out benefits for Australian architects specifying Safetyline Jalousie louvre windows in the South Pacific region. Projects range from residential dwellings in Fiji and Vanuatu to government buildings and education facilities in Papua New Guinea.

James Cubitt Architects in partnership with Peddle Thorp Architects were appointed by the Australian Department of Foreign Affairs and Trade to prepare a precinct masterplan and building designs as part of the Australian government funded Pacific Leadership and Governance precinct. The project involved three new buildings within the grounds of the University of Papua New Guinea Waigani Campus. Included in the project were the School of Business, new student services building and a new 400 seat lecture theatre which all feature Safetyline Jalousie louvre windows throughout.

Maximising ventilation is an important necessity in a hot, humid climate which make louvres an obvious choice. However, traditional styles come with their drawbacks of potential air and water leakage and the risk of being compromised from the outside if left open. Safetyline Jalousie's unique design overcomes these challenges and provides a ventilation solution that is:

- Cyclone rated with up to 9525Pa ULS / 4000Pa SLS / 800Pa Water
- Impact load tested to 550kg and;
- Provides inbuilt security (without the need for visible security bars)

The result is a set of sophisticated tropical buildings that celebrate student gathering and promotes ventilation in a safe and secure learning environment.

PROJECT SPECIFICATIONS

Quantity Supplied	125
Colour/Finish	Dulux Shimmering Champagne & clear anodised
Louvres	6.38mm ComfortPlus neutral
Operation	Motorised LDF100 drives

Start Training Centre Frankston, Vic



The \$18.5 million START (School Tafe Alliance for Regional Training) Training Centre located in Frankston Victoria is one of the largest trade training centres in Australia.

It is a purpose built centre with learning spaces for trade-based qualifications including painting, welding, carpentry and other similar subjects.

Maximisation of natural ventilation throughout the whole building was a key objective for the architect Gray Puksand and therefore Safetyline Jalousie's motorised louvre windows were an appropriate choice.

In addition to the overall ventilation properties provided by Safetyline Jalousie louvre windows, efficient and effective ventilation was especially critical in the workshop rooms.

The NCC (National Construction Code) requirement for the centre specified the level of ventilation required and Safetyline Jalousie's louvre windows provided the perfect solution to meet these standards.

Equally important for these areas was the elimination of any ingress of dust or water.

A key feature of Safetyline Jalousie louvre windows are their weatherproof seals. The seals feature on four sides of each louvre blade, creating a tight seal. These presented an ideal solution in the workshop environment and were also suitable for the high window bays that are exposed to wind and rain.

The architect was also aware of the high-quality engineering associated with the louvre window motor drives which was a key factor in deciding to specify Safetyline Jalousie for this building project.

PROJECT SPECIFICATIONS

Quantity Supplied	154
Height	469mm – 2224mm (3 – 16 blades)
Width	522mm – 1337mm
Colour/Finish	Clear anodised
Louvres	6mm EVantage grey toughened
Operation	Motorised connected to and controlled by the BMS (LDF100 drives)
Architect	Builder Gray Puksand/ ADCO Constructions

Eagleby State School, QLD



Nestled in leafy bushland, Eagleby State School’s double storey modular building was delivered and operational in a fraction of the time of a traditional build. With increased enrollments this fast and effective solution allowed the school to continue to grow without hindering class sizes and with little to no disruption to students and teachers.

Fleetwood was contracted by Queensland Department of Education to demolish an asbestos ridden legacy building and deliver a full turnkey solution with the inclusion of multiple general learning areas, along with several connected decking ramps, concrete paths and a lift for easy access.

Safetyline Jalousie have long been a popular choice for Fleetwood who pride themselves on utilising the best quality sustainable building materials. The Eagleby State School design incorporated 20 Jalousie louvre windows which were manufactured and assembled in Sydney within a short lead time ready for delivery to Fleetwood’s factory for installation. This process was critical in maximising time efficiencies and quality control and minimising offsite and onsite waste and costs.

The building has provided a cost and time effective method of supporting modern learning environments and with Safetyline Jalousie the school can be confident that they have a high quality ventilation solution that is safe, secure, reliable and sustainable both now and the into the future.

PROJECT SPECIFICATIONS

Quantity Supplied	20
Height	1414mm
Width	1000m
Colour/Finish	Clear anodised
Louvres	6mm clear toughened
Operation	Standard levers
Architect	Fleetwood Building Solutions



Kiara Noth, Mascot NSW



Kiara North by Meriton is a mixed use development in the bushy hub of Mascot, NSW.

Designed by award winning architects Turner, the elegant three-tower, 13 level development features nearly 600 Safetyline Jalousie louvre windows.

The louvres were incorporated into the design similarly to a previous Meriton project. They enclose the lower balconies to create a winter garden space, a popular feature for suburban living.

Regardless of how home owners or tenants prefer to utilise the balcony, enclosing the area creates a useful additional room or a productive and private outdoor space.

Safetyline Jalousie louvres provide up to 86% free air when open so natural cross flow air ventilation is still achieved and the amount of airflow can easily be adjusted by opening the louvres at different angles.

When closed, Safetyline Jalousie louvres have an air tight seal with an infiltration of just 0.12 L/Sqm/S. This performance rating is 12 times better than similar products which means that heat and essentially energy is not lost during cooler weather.

In addition to this, the louvres assist with noise control, a critical element that was considered in order to create a healthy and comfortable environment for human living. The architect specified 6mm toughened glazing which when incorporated into the Safetyline Jalousie system achieves an impressive weighted sound reduction of 33Rw.

PROJECT SPECIFICATIONS

Quantity Supplied	560
Height	1414mm
Width	970mm
Colour/Finish	Zeus Timberland Satin-9007315S
Louvres	6mm grey toughened
Operation	Standard levers
Architect	Turner

Carrara Sports and Leisure Centre Gold Coast, Qld



The XXI Commonwealth Games is the biggest sporting event for the Gold Coast city to date. In preparation for the international event, the Carrara Sports Precinct underwent a significant redevelopment which included the addition of the new Sports and Leisure Centre which hosted the badminton and wrestling competitions for the games.

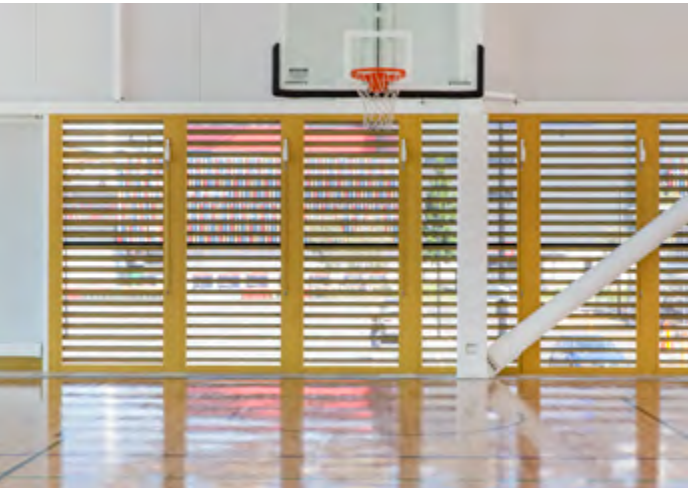
Designed by BVN Architecture and constructed by Hansen Yuncken, the facility has been built to world class competition and training standards. It comprises of two large sports halls and Safetyline Jalousie louvre windows are incorporated throughout both to provide natural ventilation and to also form an integral part of the smoke exhaust system. At three metres high and with widths up to 1.4m, each louvre window maximises air flow. With less vertical lines apparent between the banks, this worked perfectly with the large scale of the building.

All of the Safetyline Jalousie louvre windows were custom made with tinted laminate glass and powder coated in the specialty Carrara Gold colour to match the external façade. Each window frame is fitted with fire rated actuators. In the event of a fire, the automated smoke control system engages the louvre windows to open and allow fresh air to enter the building whilst large exhaust fans remove the smoke.

Following on from the Commonwealth Games, the centre continues to be used for community and elite level competition and training for numerous indoor sports including basketball and netball as well as other non-sporting uses such as exhibitions and cultural activities.

PROJECT SPECIFICATIONS

Quantity Supplied	180
Height	8299mm (21 blades) – 3054mm (22 blades)
Width	1080mm – 1400mm
Colour/Finish	Dulux Electro Medium Bronze / Interpon Carrara Gold
Louvres	6.38mm Green laminate / Powder coated aluminium
Operation	Motorised – ZA drives
Architect	Builder BVN Architecture / Hansen Yuncken



Meriton Luna Apartments Lewisham, NSW



Wide spans, strict Railcorp regulations & an impressive acoustic performance were three of the main reasons Architectural firm PTW recommended Safetyline Jalousie Louvre Windows to Meriton for their Luna Apartments project in Lewisham, NSW.

Architect Michael Yip was particularly impressed with the neat look of the larger span and the ability to customise the width to suit the overall building aesthetics. Strict DA conditions designed to protect the railway lines from items being dropped from the building. Safetyline Jalousie’s ability to limit the opening size of the window was key to meeting those conditions.

The close proximity to the railway line also meant that windows with a strong acoustic performance were required. Safetyline Jalousie louvre windows achieved a weighted sound reduction index of $R_w(C;Ctr) = 33dB(0;-1)$ in tests carried out at the National Acoustic Laboratories, in accordance with Australian Standard AS 1191-2002.

Key features of Safetyline Jalousie louvre windows are:

- Spans - extra wide spans up to 1.4 metres
- Security - inbuilt & impenetrable
- Seals - weatherproof with superior acoustic, wind & water performance
- Screens - removable, internal screens

PROJECT SPECIFICATIONS

Quantity Supplied	374 (supplied over 4 towers at the site)
Height	1414mm (10 blades) and 1819mm (13 blades)
Width	550mm to 1100mm
Colour/Finish	Powder coat – Duratec Monument Satin
Louvres	Glass – 6.38mm grey tint laminate
Operation	1197 Turnhandles
Architect	PTW



Bohem Apartments Adelaide, SA

Incomparable to any other residential building in Adelaide, Bohem is a statement of architectural ingenuity and is the epitome of urban luxury.

The 22-storey development features 224 one-, two- and three-bedroom apartments with stunning views over the city.

Safetyline Jalousie were thrilled to receive the call to be involved with the project which has transformed Adelaide’s CBD.

Referred by an existing client, Safetyline Jalousie were put forward to be incorporated as part of the building’s smoke ventilation system. Installed in the corridors of each level, the louvre windows are fitted with fire rated actuators which are programmed to open if smoke is detected. As with any multi-residential building, the escape route for a fire is via the stairs so improving conditions in corridors and lobbies will significantly help occupants to access the fire exits and escape in an emergency.

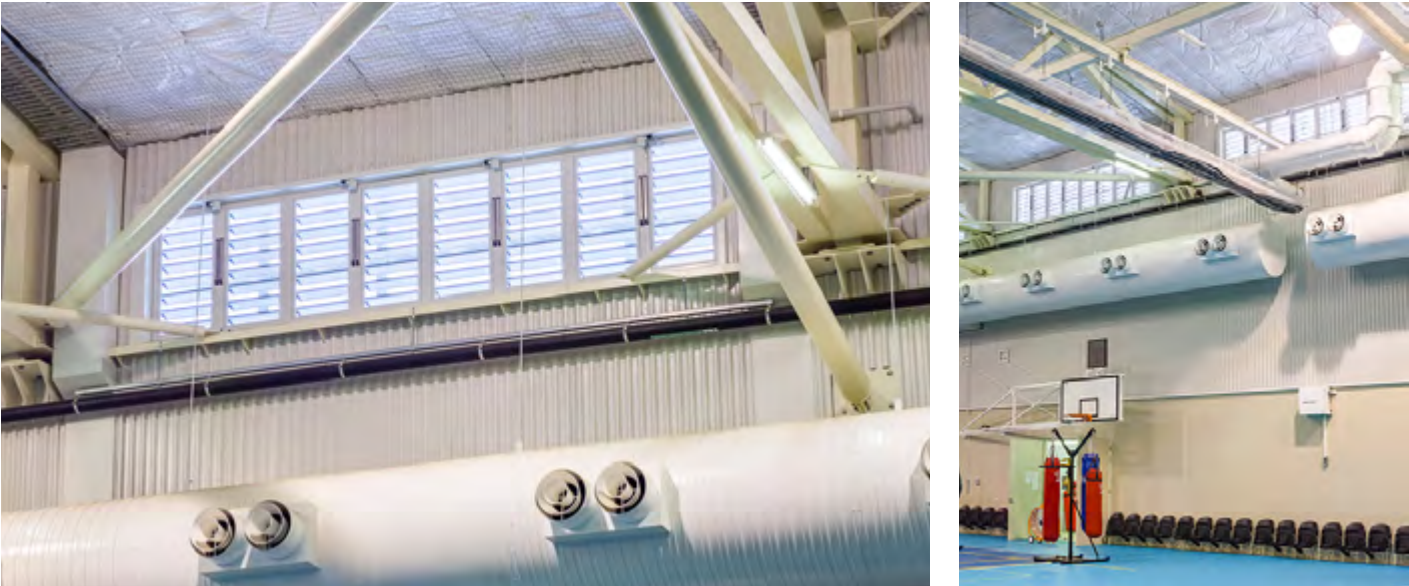
This unique safety function coupled with the system’s unmatched performance ratings in terms of wind, water and acoustics made Safetyline Jalousie an easy choice in the conception of this vertical village.



PROJECT SPECIFICATIONS

Quantity Supplied	76
Height	1894
Width	919mm
Colour/Finish	Powder coat – Dark bronze
Louvres	6mm grey toughened glass
Operation	LDF100 motors
Architect	Enzo Caroscio Architecture & Woods Bagot

Queensland Government Cyclone Shelters



As part of a \$60million Queensland Government cyclone shelter program over 1,000 Safetyline Jalousie louvre windows and louvre window panels have been installed in more than a dozen public schools and community centres across the state.

The shelters are designed to provide protection from winds up to 306km per hour experienced in a Category 5 cyclone.

To ensure that Safetyline Jalousie louvre windows met the windborne debris impact loading criteria for the Cyclone Shelters, the louvre windows had to undergo a thorough testing process.

The windows were tested for 'Debris Type B', using 8mm steel balls as test missiles. Five steel balls were fired into the closed louvre windows at various speeds. Safetyline Jalousie louvre windows exceeded the Australian standard of 45 metres per second, making them one of the toughest louvre windows in the market.

PROJECT SPECIFICATIONS

Quantity Supplied	1,000
Height	Various
Width	Various
Colour/Finish	Powder coated – Surfmist
Louvres	Aluminium – Powder coated – Surfmist
Architect	Project Services QLD

Johanna O’Dea Court

Camperdown, NSW

Safety and security were the key priorities in the refurbishment of Johanna O’Dea Court, a landmark multi-storey NSW Family and Community Services apartment block located in Camperdown, NSW.

After falling into a serious state of disrepair, the building underwent a complete refurbishment to upgrade the facilities to provide a safe, secure, amenable place for residents.

As a residential building, natural ventilation was a key objective for the architect. The challenge was to achieve the required ventilation without compromising safety and security.

Safetyline Jalousie louvre windows were the ideal choice to meet this challenge. They are among the only windows on the market that comply with recent changes to the National Construction Code (NCC)* without any modification or additional hardware.

After installing Safetyline Jalousie louvre windows ventilation increased by 200%. Our louvre windows also delivered an aesthetic element that complemented the existing building’s features.



PROJECT SPECIFICATIONS

Quantity Supplied	200
Height	1144mm
Width	700mm
Colour/Finish	Clear anodised finish for frames and internal insect screens
Blade Opening	106mm
Louvres	6.38mm ComfortPlus glass
Architect	NSW Government Architects Office

La Trobe Sports Stadium Bundoora, Vic



The La Trobe Sports Stadium is based at La Trobe University's Bundoora campus. The new state of the art facility was part of La Trobe's \$150 million Sports Park development - a key component of the University's ambitious \$5 billion University City of the future plan to transform Melbourne's north.

The indoor courts are a hub for all indoor sporting activities including basketball, badminton, netball, futsal and volleyball.

Installed on all 4 facades of the building, louvres were nominated as an integral part of the design for their ability to maximise cross flow ventilation and achieve the desired aesthetics for the building which utilises vast contrasting proportions of glass, aluminium, steel and timber.

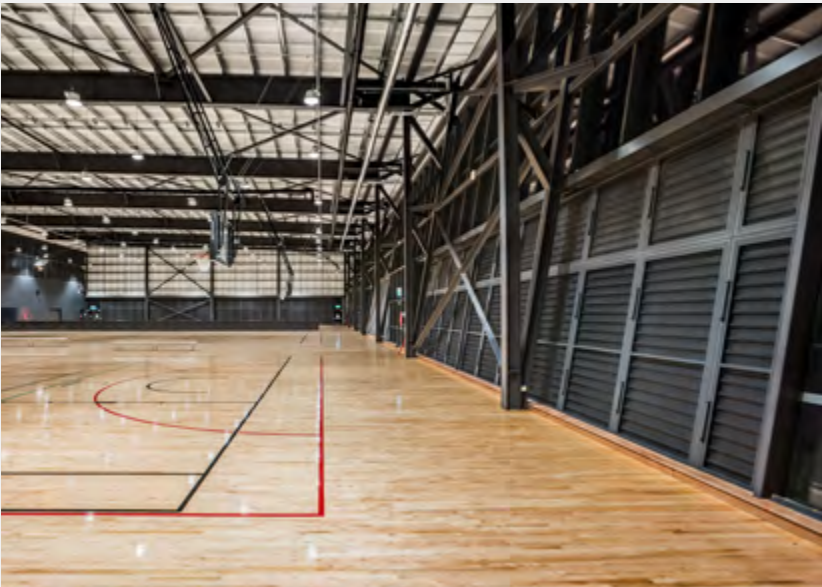
Taking into consideration ball sports and the risk of impact, the design team were seeking a product that would be robust and secure. Safetyline Jalousie demonstrated both of these attributes with the system having being tested to withstand up to 550kg of force.

Acoustics was another concern with the noise from the likes of whistles and crowds cheering being amplified out to the rest of the Sports park. Again, Safetyline Jalousie had the appropriate test data displaying the required sound reduction.

In addition to the performance requirements, the fact that the product is manufactured in Australia and delivered to site as a pre-fabricated and assembled unit also meant that the procurement and installation process was quick and simple, avoiding delays for the project timeline.

PROJECT SPECIFICATIONS

Quantity Supplied	373
Height	2244mm
Width	1385mm
Colour/Finish	Dulux Duratec Monument Matt
Louvres	Aluminium
Operation	Motorised LDF100 drives
Architect	Warren & Mahoney / Adco Constructions



AWARDS

Young Entrepreneur Sydney

Manufacturing, Wholesale and Distributor
Winner 2018



My Business Awards

Export and Manufacturing Business of the Year
Finalist 2019



Young Entrepreneur Sydney

Trailblazer of the Year 2019



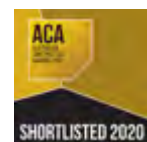
Australian Small Business Champion Awards

Manufacturing Finalist 2020



Australian Construction Awards

Innovator & Supplier of the Year
Finalist 2020



Outstanding Leadership Awards

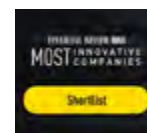
Men in Leadership
Finalist 2020





AFR Boss

Most Innovative Companies
Finalist 2020



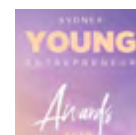
Asia Pacific Stevie Awards

Innovation in Construction and Manufacturing or Materials Wilver
Winner 2020



Young Entrepreneur Sydney

Property and Construction
Winner 2020



Corporate Vision

Corporate Excellence Award
Winner 2021



Small Business Champion Awards

Manufacturing
Finalist 2022



Good Design Awards

Product Design
Category Winner 2022



TESTIMONIALS

“The Jalousie product has a unique offering in terms of performance, aesthetics, reducing noise, whilst maintaining natural ventilation.

As a company, they are dynamic, they are open to ideas, they adapt quickly and they are proactive at solving design problems.

They have been incredibly easy to work with. I have recommended them to architects and have confidence in their solutions.”

Simon Kean, Director – Spoke Acoustics, NSW

“I think where Safetyline Jalousie is great from my point of view is that they are actually looking at all of the performance requirements for their product. So that’s waterproofing, that’s thermal performance as well as cost and functionality.

I recommend Safetyline Jalousie because I know that they have good designs, the test results, I know that they meet the performance, and when I specify for a project, I know that I have a compliant product.

Neil McClelland, Technical Director – TTW, NSW

“I have been consulting in noise and vibration for over 30 years. My reputation is important. If I don’t recommend the right products, then we don’t get the right results, which is why I use the best. I have no hesitation in recommending Safetyline Jalousie louvre windows, they are the best louvred acoustic window on the market that are able to provide a significant reduction in noise. You get value for money in that you get a product that is going to last a long time.

This is an Australian owned, family run company and I’m proud to support them.”

Nick Koikas, Director, – Koikas Acoustics, NSW

As a company, they are dynamic, open to ideas, they adapt quickly and are proactive at solving design problems.

“Working with Safetyline Jalousie has a really strong benefit and advantage in that you are dealing with a local company, you’re dealing with the people that own the company, who make the decisions and follow through with what they say.

For us to put them forward on jobs, we really have confidence that what we are telling our clients, we know we can achieve by using Safetyline Jalousie.

This became very apparent in our work on the Arthur Phillip school project when Safetyline Jalousie were able to deliver an order of its’ size without any issues, without missing anything, any damage or any errors. It’s testament to their ethic, their culture and the way that they run their business.

They’re an Australian owned company, pushing the boundaries, trying to innovate, trying to improve what they do and set the benchmark a lot higher, I think it’s a credit to them.

Kevin Hartin, Owner & Director – Ausrise Aluminium, NSW

“We do windows and doors on high rise buildings ranging from 4–28 stories across Sydney. We’ve been working with Safetyline Jalousie for about four years now and have completed approx. 12-15 different projects together for clients like Parkview, Richard Crookes and Taylors.

Our site team install the Safetyline Jalousie louvres which are supplied as a fully glazed system, that is delivered to site and easily slides into our frames or openings, taking about 10 minutes and we can walk away.

It was an easy decision to team up with Safetyline Jalousie. Their service is always great and the product is great which is a big thing in our industry.”

Paul Borg, Director – Supplied Holdings, NSW

“From aged-care homes to sports halls, from schools to skyscrapers, Safetyline Jalousie’s louvres have been installed in hundreds of commercial projects nationwide, which is testimony to the value of their products.

Over 10 years, the thousands of architects our national team have worked with assure us, that when it comes to improving natural ventilation and enhancing indoor air quality, no other louvres compete with Safetyline’s.

Time and time again, architects across the country have attested, Safetyline’s louvres are superior in reliability and ease of use.

They love the way they look in all settings and trust them above all other products because of their quality and proven track record of safety, security and longevity.”

Elsie Atttoh, CEO – The Arc Agency, NSW

Testimonials

While our office specialises in education, we do projects across a broad range of building types, including public and private residential, churches, early learning centres and community hubs.

Some recent projects where Safetyline Jalousie louvres were installed are on Federation Training's Chadstone Campus (formerly GippsTAFE), Alamanda College in Point Cook, Newbury Primary School in Craigieburn North-West, Caroline Springs Leisure Centre Extension and the Sub-Regional Tennis Facility.

We specify Safetyline Jalousie louvres because of their water-tightness, louvre bearer rod (which provides security from break-ins as well as decreased chance of damage from inside from balls or other objects), and the inner channel which allows easy installation of the flyscreen.

Is the investment worthwhile? Yes, because we don't have issues with them once they are installed and the process of working with Safetyline Jalousie is easy plus their service is excellent.

Gerard McCurry, Director – Brand Architects, Vic

AFRC Lab have modelled Safetyline Jalousie using AFRC protocols and honest, accurate and scientifically based results identifying a louvre window product that can maximise free air as well as achieve impressive performance benefits.

In my opinion, Safetyline Jalousie have developed a sustainable and future proof solution with their unique louvre window product and SmartAir system. By Automating the control of CO₂ levels, temperature, humidity and natural ventilation, a healthy and comfortable environment can be maintained in any public building reducing the need for mechanical systems, their associated costs and ultimately the affect that they have on our environment.

David Morehouse, GM – AFRC Lab, Vic

A lot of the project work we do is essentially education, commercial, retail, some aged care and childcare. In the last 10 or 11 years I would say that we have specified and used Safetyline Jalousie louvres on over 50 projects. Second to none, there is no product on the market like it.

Light and ventilation are the first things you learn in design and it just opens up so many opportunities because of its flexibility, its spanning capabilities, its weather tightness, security and overall strength of the window, it just opens up a new realm for us.

Dario Dell'Anniziata, Director – Architectural Collaborative, Qld



SAFETYLINE JALOUSIE

Phone 1300 86 3350

Email sales@safetylinejalousie.com.au

SAFETYLINEJALOUSIE.COM.AU